



# XEOMA VIDEO SURVEILLANCE SOFTWARE



FELENASOFT LTD.



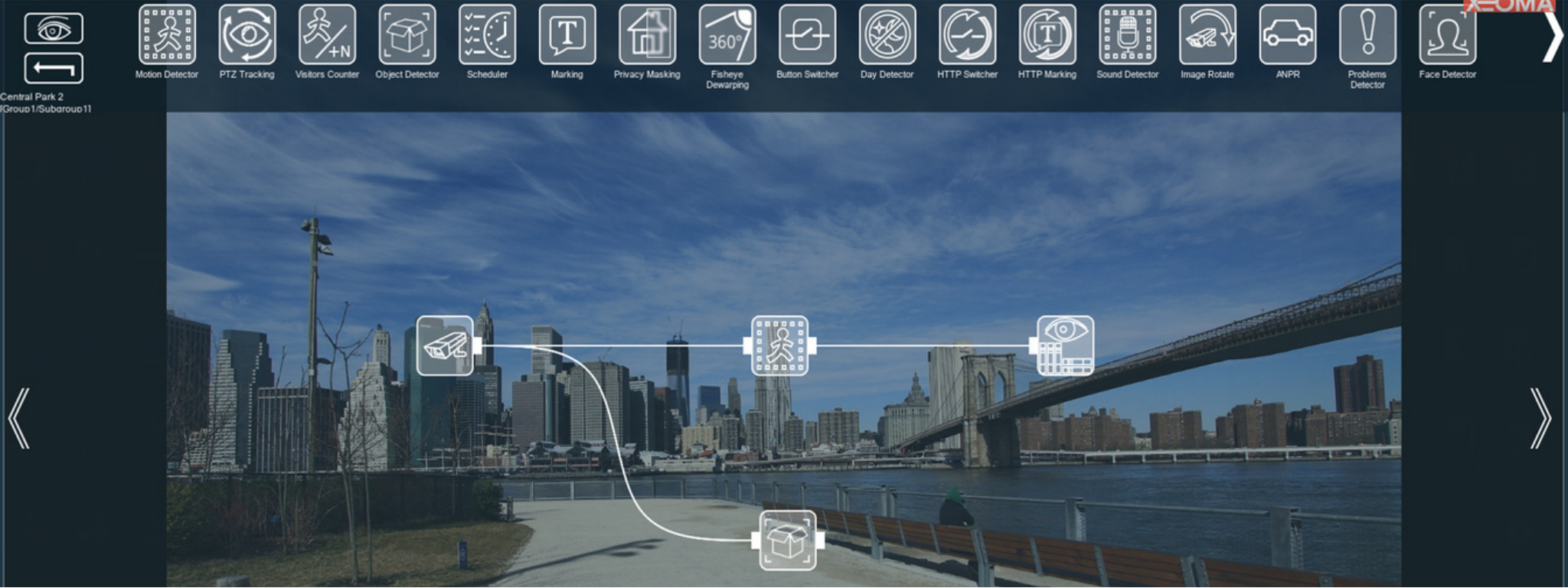
# Introduction

Inspired by children's playset toys, Xeoma allows to build your PERFECT video surveillance system by combining blocks of functionality.

Go ahead, play around — enjoy your video surveillance.

- 99% of camera models are supported (ONVIF, MJPEG, H.264, H.265, Fisheye, WiFi, PTZ, audio, etc.)
- Works on Windows, Linux, Linux/ARM (Raspberry), Mac OS X, iOS and Android.
- User-friendly interface – simple to work with!
- AI-based functionality (face, license plates, emotions, color, object, sound recognition and many other things)





# XEOMA's innovative interface

Xeoma's main advantage is its innovative interface based on construction-set principle.

Easy for non-tech savvies, powerful for professionals, it allows to build both small and enterprise-level systems with truly unlimited number of cameras (up to several thousands cameras on a single computer).

Combine Xeoma modules and create your own perfect video surveillance system.



# XEOMA VERSIONS

XEOMA HAS A VERSION FOR EACH BUDGET AND TASK.  
FREE DEMO LICENSES ARE AVAILABLE FOR TESTING.

- **Free version:** up to 1000 cameras for preview, up to 3 modules per chain, limited functionality. Doesn't accept remote connections. Settings are kept. No ads, no license needed. No restrictions on the time of use.
- **Trial version** (Demo version): unlimited amount of cameras, full set of features and modules, remote connections and user profiles available. No ads, no watermark. Settings are reset within 8 hours. Archive retention - 1 hour.
- **Commercial version** (Pro, Standard, Lite and Starter editions): unlimited amount of cameras (depends on the purchased license), features and modules for any budget and task. Licenses are for lifetime (1-time purchase). Free remote access through P2P. AI-based features available.

# XEOMA APPLICATION SCENARIOS

Xeoma can be used in various environments - from home or small business video surveillance to large-scale corporations with 1000+ cameras



**INDUSTRIES**



**FINANCIAL**



**FOOD SERVICES**



**MUNICIPAL**



**RETAIL**



**REAL ESTATE**



**AIRPORT**



**EDUCATION**



**PETS SURVEILLANCE**

# XEOMA COMMERCIAL EDITIONS

## XEOMA LITE

- \* UP TO 4 CAMERAS
- \* UP TO 6 MODULES PER CHAIN
- \* 20 MODULES OF YOUR CHOICE
- \* ONLY ADMIN PROFILE
- \* AFFORDABLE PRICES
- \* WORKS ON VIRTUAL MACHINES

## XEOMA STARTER

- \* UP TO 1000 CAMERAS FOR PREVIEW
- \* ARCHIVE RECORDING FOR 2 CAMERAS
- \* REMOTE ACCESS
- \* REBRANDING
- \* VERY AFFORDABLE PRICE
- \* NO WATERMARK
- \* WORKS ON VIRTUAL MACHINES

## XEOMA STANDARD

- \* ANY NUMBER OF CAMERAS
- \* FLEXIBLE USER PROFILES
- + ADDITIONAL MODULES (FACE RECOGNITION WITH AI, FACE ID, QR-CODE/CARD READER ETC.)
- \* BASIC MODULES:  
SCHEDULED, CONTINUOUS OR MOTION-TRIGGERED RECORDING, RECORDING TO SEVERAL DISKS, NAS, NOTIFICATIONS (SMS, EMAIL, ETC.), VISITORS COUNTER ETC.
- \* REMOTE ACCESS FROM ANYWHERE EVEN WITHOUT STATIC EXTERNAL IP ADDRESS
- \* EASY ADMINISTRATION, NETWORK CLUSTERING (MULTI CLIENT AND MULTI SERVER ARCHITECTURE)
- \*FAILOVER SUPPORT

## XEOMA PRO

- \* ANY NUMBER OF CAMERAS
- \* FLEXIBLE USER PROFILES
- + ADDITIONAL MODULES (FACE RECOGNITION WITH AI, FACEID, QR-CODE/CARD READER ETC.)
- \* PROFESSIONAL MODULES:  
FACE RECOGNITION, LPR, CREATION OF YOUR OWN CLOUD, CROSS-LINE DETECTOR, ABANDONED OBJECTS DETECTOR, MULTI VIEW AND EXPORT OF SEVERAL ARCHIVES, LDAP, SMOKE DETECTOR
- + BASIC MODULES OF THE STANDARD VERSION
- \* EASY ADMINISTRATION, NETWORK CLUSTERING (MULTI CLIENT AND MULTI SERVER ARCHITECTURE)
- \*FAILOVER SUPPORT

# Xeoma Pro

Professional video surveillance.  
Intellectual features. Easy to manage.

- Create your own Cloud service and earn more with Xeoma
- Free rebranding/customization
- LDAP support
- Intellectual modules and features (license plate recognition, face recognition, simultaneous view of multiple archives, thermal cameras integration etc.)
- PTZ presets and tour guides
- JSON API for remote control of Xeoma features
- Multilayered e-Map and Heatmap
- Support of IP microphones and USB joysticks



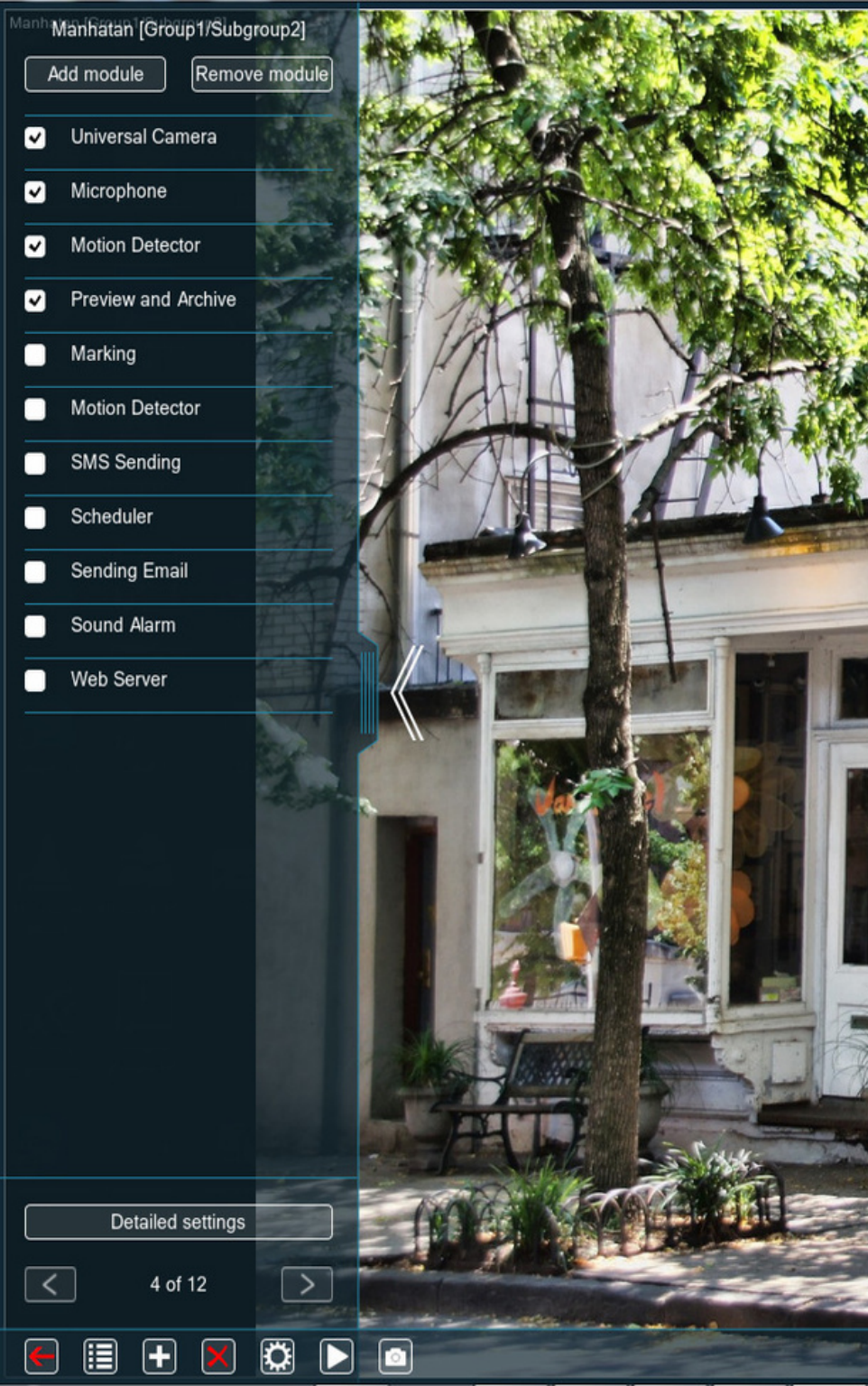
# Additional modules

Based on **artificial intelligence** and deep machine learning

- Face recognition (recognition accuracy up to 90%)
- Search by photo (search in the archive)
- Emotion recognition (sadness, happiness etc.)
- FaceID (integration with QR-code or card readers)
- Object type recognition (car, animal, human etc.)
- Smart-card reader (working with access cards)
- Sound Events Detector (glass break, baby cry, scream, gunshots etc.)
- Crowd and social distance detector
- Gender and age recognition
- Color recognition (traffic control)
- Vehicle speed detector
- QR-code recognition
- Construction site safety
- Mask detector
- Sports Tracking
- Text recognition
- Slip and Fall detector
- License plate recognition
- Drone and airplane recognition
- Eye tracking
- Parking spots (free/occupied)
- 360° surround view







# FREE REBRANDING

Xeoma offers a free customization and rebranding tool for OEM/ODM.

By means of the rebranding utility your customized Xeoma can change UI design, logo, modules' icons, have a different name, your company's address, support business hours, links to your site, set of modules and features, etc. Change Xeoma to your taste!

You'll be able to change the URLs, make changes into archive's work, activation, connection. Add/delete features, interface elements, and modules according to your goals. It's in your power to make the program great and extra comfortable for your users!

Use your rebranded Xeoma version and its full potential to earn more.

White label customization is also available.



# XEOMA CLOUD

- Perfect solution for the off-site data storage
- No equipment required, no maintenance needed - everything
- Connect cameras (even without static IP address), connect, view, download

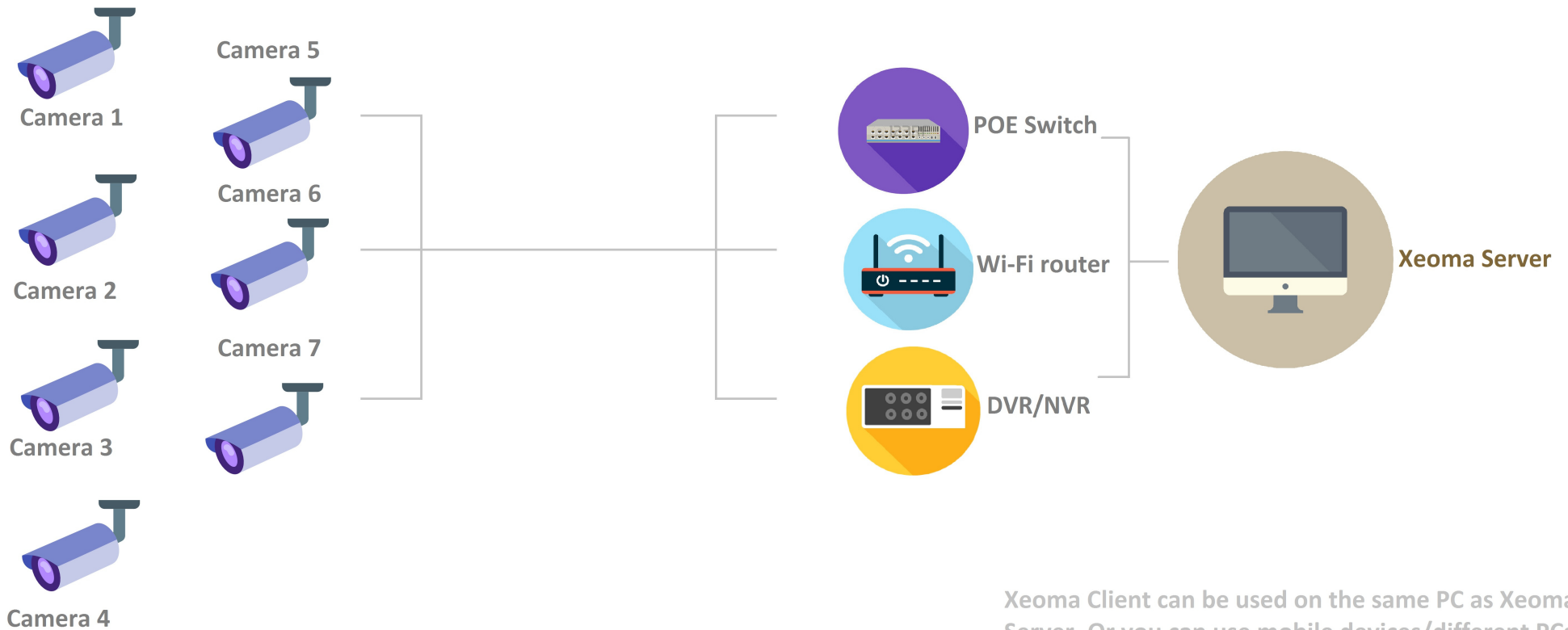


- Can be used with desktop Xeoma
- No hidden costs or additional payments: what you see is what you get!
- Monthly subscriptions starting from \$0.75/month for 1 cam



# EASY CONNECTION

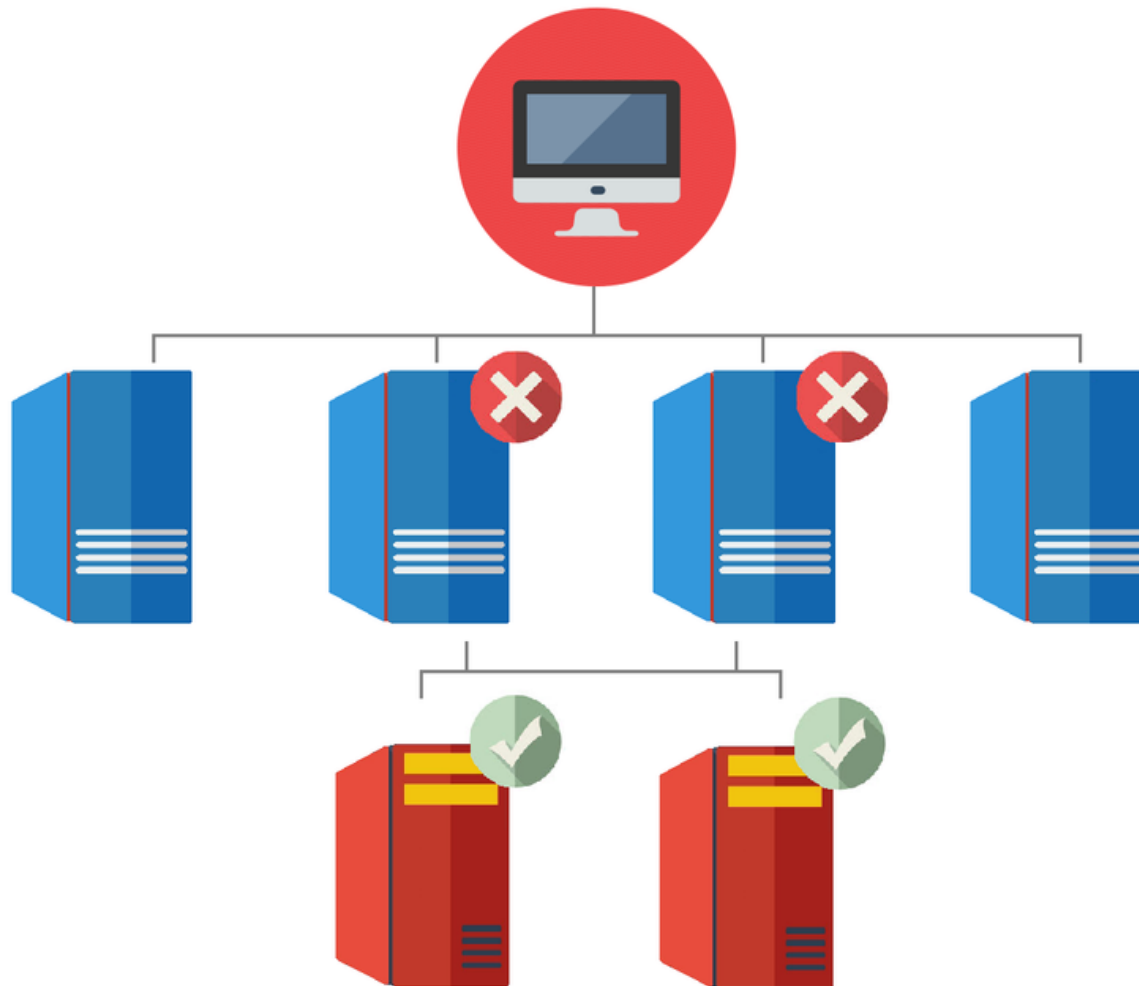
EASILY CONNECT YOUR CAMERAS TO THE SERVER WITH XEOMA ON IT. USE XEOMA'S CLIENT PART TO CONNECT. ALSO AVAILABLE VIEW IN BROWSER.



Xeoma Client can be used on the same PC as Xeoma Server. Or you can use mobile devices/different PCs

# FAILOVER SUPPORT

WITH FAILOVER, IF ONE OR SEVERAL OF YOUR MAIN SERVERS FAIL, BACKUP SERVERS WILL TEMPORARILY REPLACE THEM



# About us

FelenaSoft is a growing international company with offices around the world. We have been developing software products since 2004. Our main goal is to create quality product for our customers. Xeoma software exists in the market for more than 10 years. Xeoma is registered in The Ministry of Digital Development, Communications and Mass Media.

Also, we provide software development services: IT-outsourcing and outstaffing. Many years of experience in using modern and flexible software development technologies, focused specialization and low flexible cost of services allow FelenaSoft to offer each client a solution to any problem with the highest quality and efficiency.





[www.xeoma.com](http://www.xeoma.com)



[support@felenasoft.com](mailto:support@felenasoft.com)



+123-456-7890 (toll free)

## Contact us

We will be happy to help you with any question. Our free and friendly technical support is always in touch!

