

# THE WONDERS OF VIDEO ANALYTICS

IN XEOMA VIDEO SURVEILLANCE SOFTWARE



## WHY XEOMA

Xeoma is not simple video surveillance software. It's a philosophy.

So flexible that nearly any goal can be achieved - **conveniently** for you.

So powerful that it may surprise you.

So enjoyable you will love working with surveillance.

## UNPRECEDENTED EASE

Whether for business or home, Xeoma's graphical modular interface is **easy to understand** for users of any technical background.

## WORKS ANYWHERE, WITH ANYTHING

Supports all major operating systems: Linux (including ARM-architecture), Windows, Mac OS and even Android.

User-friendly web interface and free mobile apps.

Easy connection and work **99%** of cameras in the world ( 434+ brands)

## ENERGY AND SPACE EFFICIENT

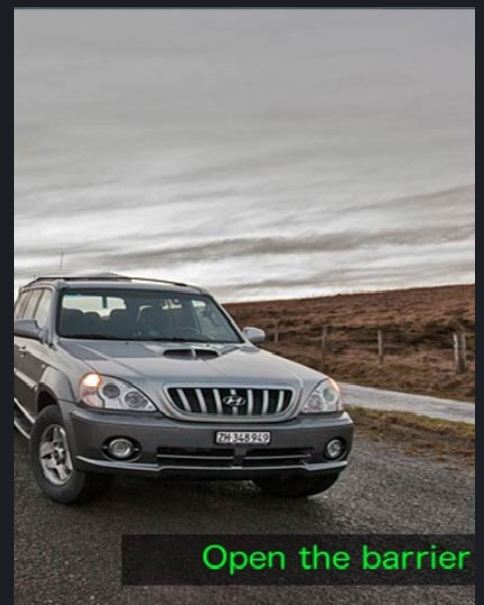
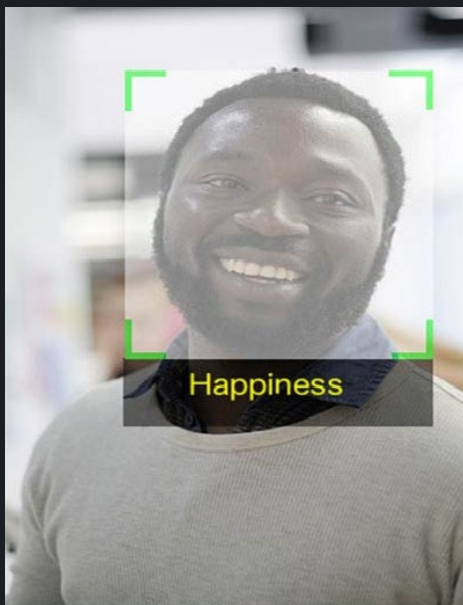
Xeoma can do more than others, even if the conditions are the same.

*Start working with Xeoma today. Start increasing your profits with Xeoma **today**.*



# AI-BASED FEATURES

NEURAL NETWORKS & MACHINE LEARNING  
HERE TO INCREASE YOUR PROFITS



Xeoma video surveillance software offers a variety of deep machine learning features that are just like humans. **But better.**

Neural networks technologies make it possible to combine the speed of computer vision, the 24/7 operation of machines, with the best that human operators can offer: **ability to think**

**See more below**



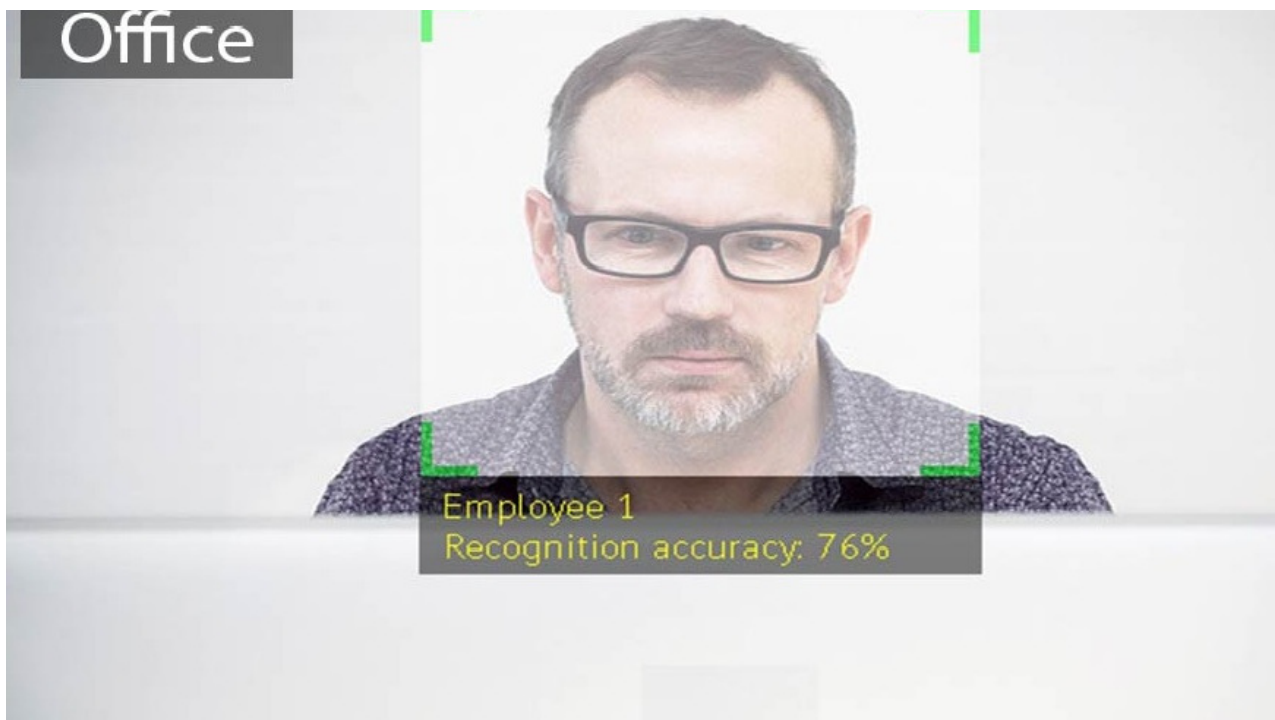
## OBJECT TYPE DETECTOR

This module can distinguish the type of object in camera image:

- car
- human
- motorcycle
- animal
- UAV, drone
- or bird

Can be used to facilitate **prevention of false alarms**,  
reaction only to certain types of objects,  
or gathering of more precise data on motion events





## FACE RECOGNITION AND COMPARISON

With the **Face recognition** module your system can

- automatically detect human faces in camera image,
- recognize people from black or white lists
- have automatic reactions to a certain person (alerts, home automation, etc).

In retail it helps identify a loyal customer and send them a tailored special offer to their phone, instantly. In all other spheres, it's a great tool for secure access.

! The **FaceID** module works in **access control systems** and with police databases with **QR code reading** and **Smart card reader** modules

! With the **Privacy Masking** module, found faces can be automatically blurred for privacy reasons

! Medical masks detection is also available



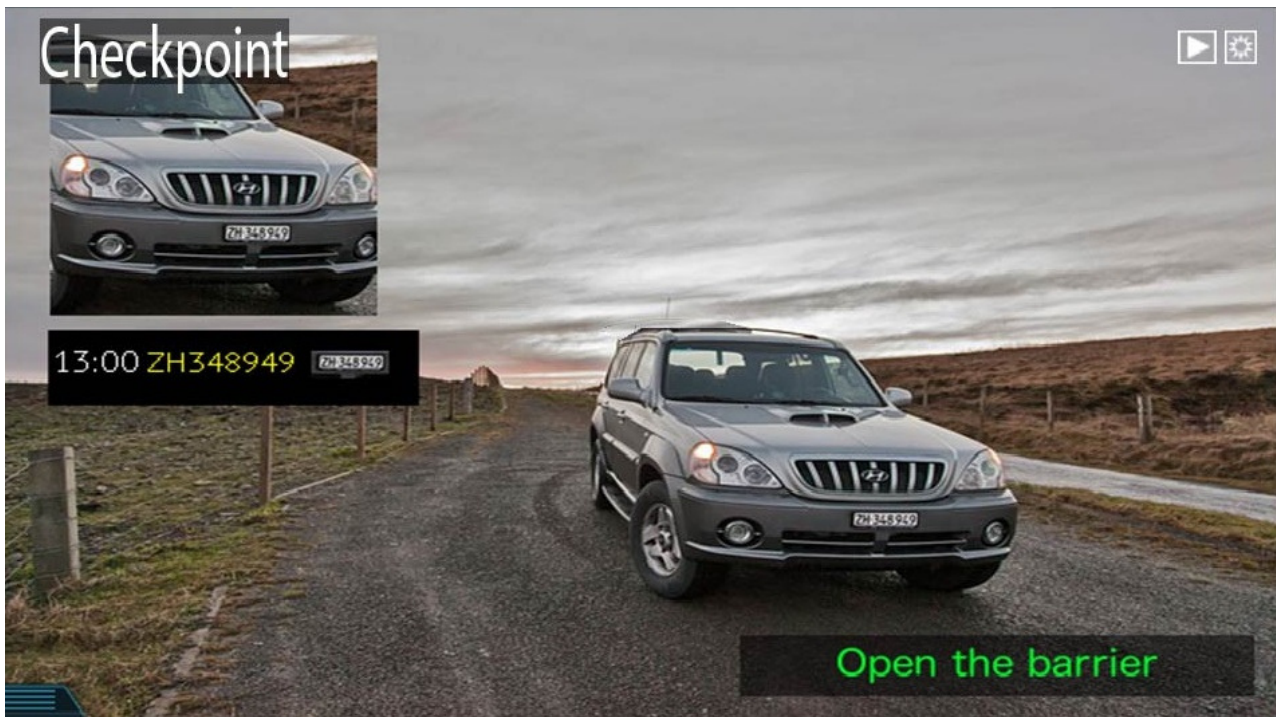
## CORONAVIRUS FIGHTING MEASURES

Xeoma offers a series of measures to aid in fighting the pandemic:

- **Mask Detection** will trigger an alarm if a person without a mask on their face is detected;
- **Social Distance** measuring will notify you if people are standing too close to each other;
- **Fever detection** (color recognition) will be a great support to thermometer devices;
- Stay time in public spaces is limited in many countries during the epidemic. Xeoma has a counter for **stay time tracking**;
- **Visitors Counter** will help limit number of people in a public place.

Stay safe and help others stay safe

Learn more about Xeoma and AI modules at [www.xeoma.com](http://www.xeoma.com)



## VEHICLE LICENSE PLATE RECOGNITION

- Detect and recognize license plates of standing and moving vehicles
- **Automate entry** (integration with barriers, lights, access control databases)
- Support for black and white lists, **Search** for certain plates through recordings

Also available: detection of speed limit violation or violation of road traffic regulations (e.g. wrong way driving, ignoring stoplight, etc.)

Useful in **parking lots, in police, in traffic monitoring**



Learn more about Xeoma and AI modules at [www.xeoma.com](http://www.xeoma.com)



## VISITORS COUNTER

Visitors Counter is a unique function that allows you to effectively analyze the footfall traffic for your shop, showroom or your office attendance.

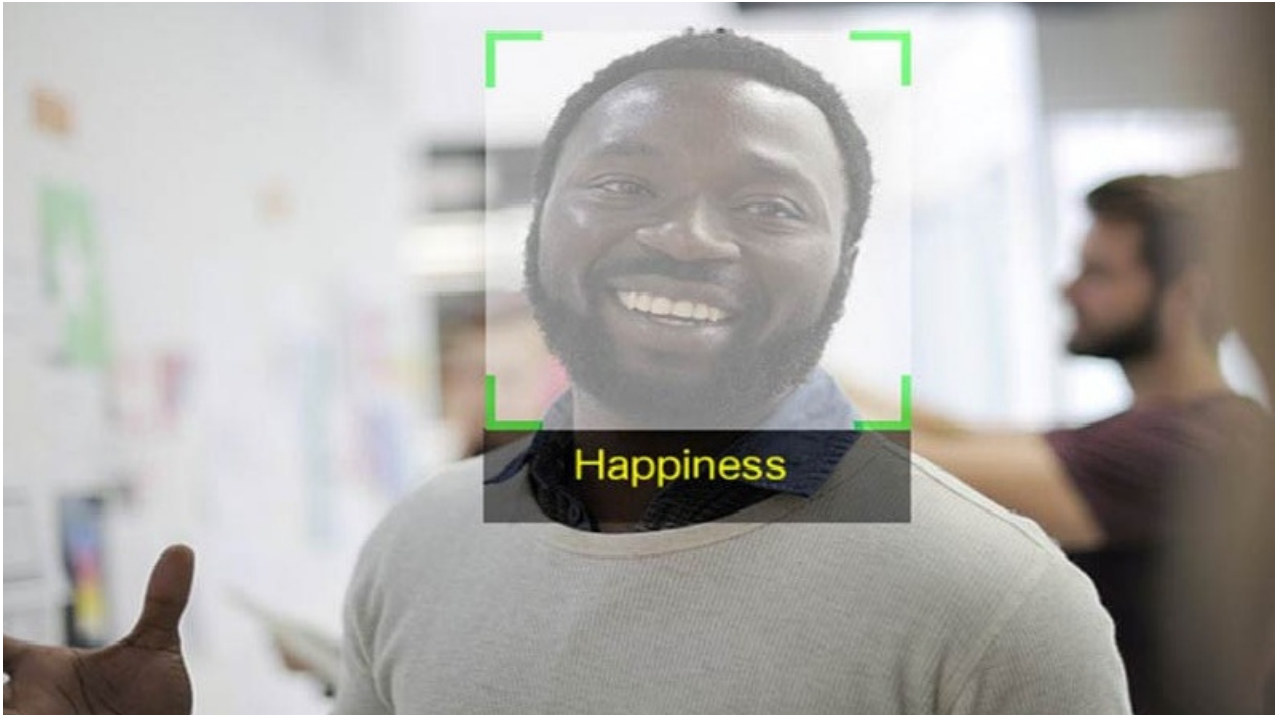
The Cross-Line Detector module also lets you draw a virtual line and is triggered if the drawn line is crossed. The module is capable of **detecting the direction of movement** and counting how many times the line was crossed in certain direction.

The **Crowd Detector** can detect **queues**, or notify you when the recommended **social distance** is not observed.

Useful in **retail, access control systems, as well as in homes for security and elimination of false alarms**



Learn more about Xeoma and AI modules at [www.xeoma.com](http://www.xeoma.com)



## EMOTIONS RECOGNITION

This module can distinguish 7 emotions in human facial expressions:

- happiness
- anger
- fear
- sadness
- surprise
- disgust
- neutrality

### RETAIL, HORECA, ENTERTAINMENT:

See satisfaction level of customers with goods, environment and service  
Make sure workers are friendly and provide excellent service

### POLICE:

Prevention of crimes: detect mood that can result in criminal activity  
Fast reaction: detect fear to respond to threats before crime happens





## **CUSTOMERS DEMOGRAPHICS**

Xeoma's intellectual modules will help you gather the valuable information about the business' target audience

### **AGE RECOGNITION:**

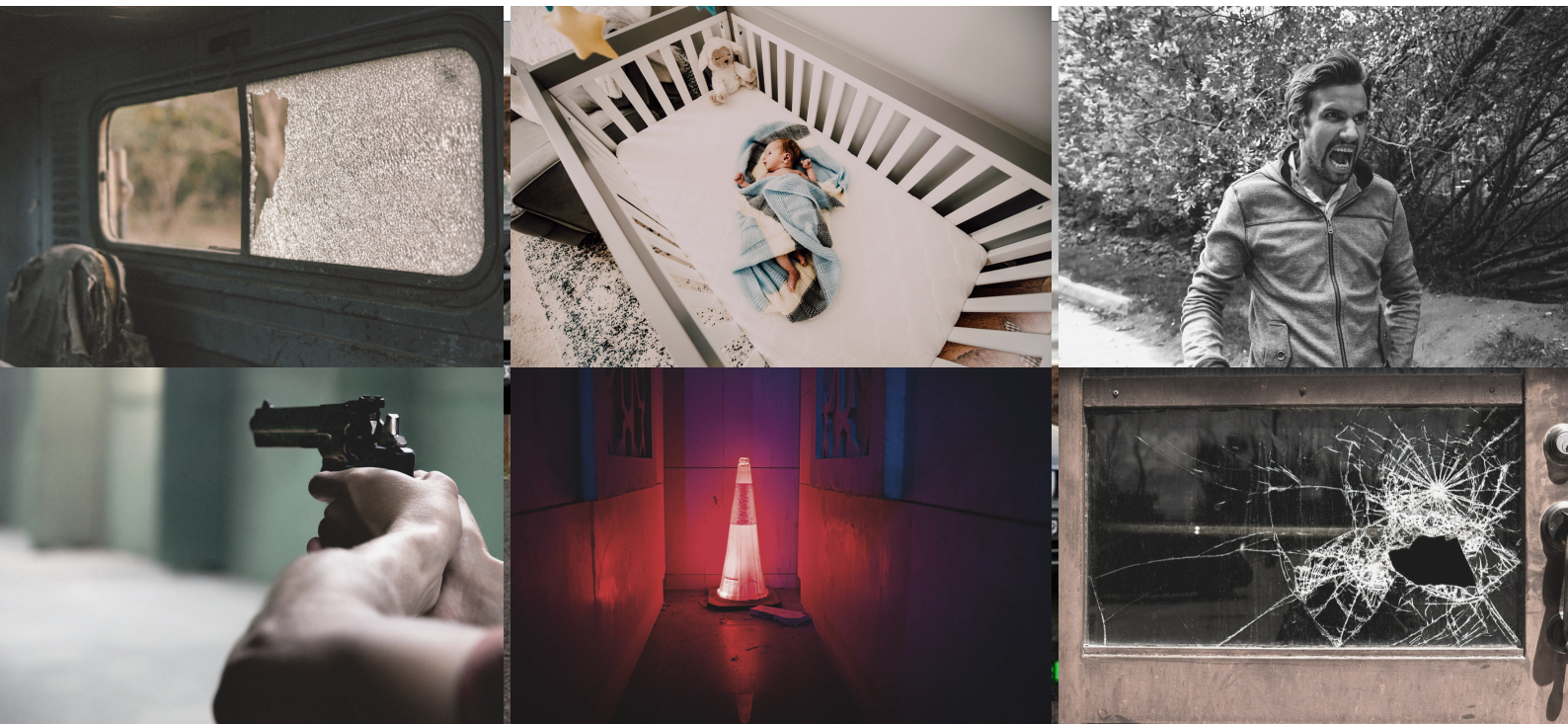
Based on Artificial intelligence. This module finds human faces in the camera view, displays their most probable age, and if the estimated age is in the selected range, the module passes the signal to the needed reaction module.

### **GENDER RECOGNITION:**

Ideal for retail stores where promo ads or notifications can be adjusted based on a visitor's gender for higher sales rates. You can select to which gender the system will react, and set the desired accuracy level to get rid of episodes where the system is less sure of recognition quality.

+ Can be used with Emotions and Face Recognition, Visitors Counter, etc.

Learn more about Xeoma and AI modules at [www.xeoma.com](http://www.xeoma.com)



## SOUND TYPE RECOGNITION

Based on Artificial Intelligence and deep machine learning, this module is designed to recognize 5 types of sound events:



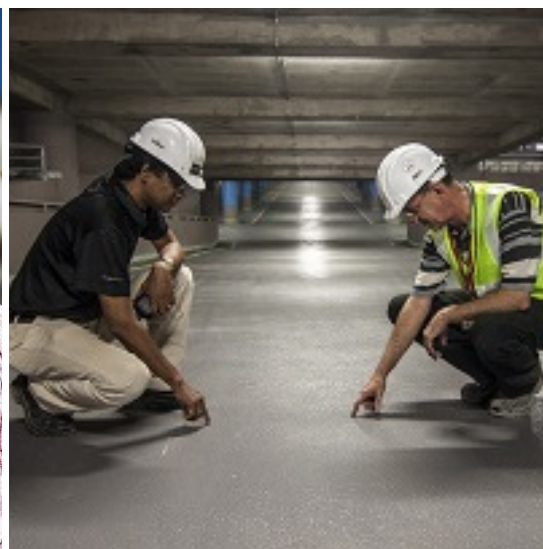
- glass break
- alarm
- baby cry
- screams
- gunshots

The module is constantly "listening" to the camera stream for noises of a certain type, based on specific characteristics typical for that type.

Now your camera system can not only **see** things – it can **hear** events as well!

Useful in **police, homes, residences, and corporations**

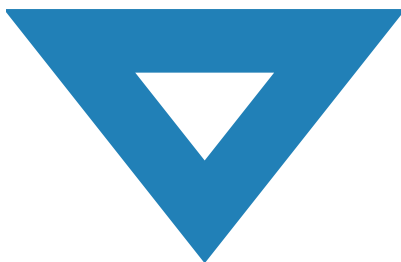
Learn more about Xeoma and AI modules at [www.xeoma.com](http://www.xeoma.com)



## SAFETY GEAR DETECTOR DETECTION OF SAFETY HELMETS

“**Detector of construction site safety**” module that can detect **helmets** and **work robe** in camera's sight in construction sites and thus help ensure the compliance with health and safety regulations.

Works with any gender and age of people, in open air or enclosed locations, in any weather, and without any special equipment!



For construction sites,  
+ high rise works,  
+ drilling and mining industries,  
industrial and heavy machinery operations,  
+ electrical works,  
as well as roadwork and parking

Learn more about Xeoma and AI modules at [www.xeoma.com](http://www.xeoma.com)

Airport



## UNATTENDED OR MISSING OBJECTS

Automatically detect objects in camera image that were left unattended for a long time.

Useful in: airports, railway stations, stadiums, mass public occasions

It works for detection of missing objects as well.

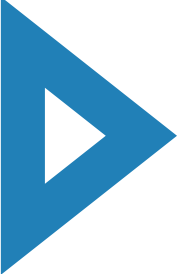
Useful in: galleries, museums, shops, store houses



## HEATMAP

Heatmap will visualize most popular areas with most motion. Best for retail

# WHAT ELSE DOES XEOMA HAVE?

- 
- Loitering detector
  - Fisheye image dewarping
  - System sabotage detector
  - Visitors counter
  - Crossing the line detector
  - Smoke detector
  - PTZ presets, tours, patrol, tracking
  - eMaps of premises
  - Flexible User permissions
  - Support for 3rd-party devices
  - Support for smart home systems
  - Works with cash registers
  - Works with cameras' memory cards
  - LDAP
  - Notifications: SMS, Email, custom
  - Loop recording to HDD, RAID, Cloud discs, USB, SD cards
  - Building your own Cloud
  - and many more!

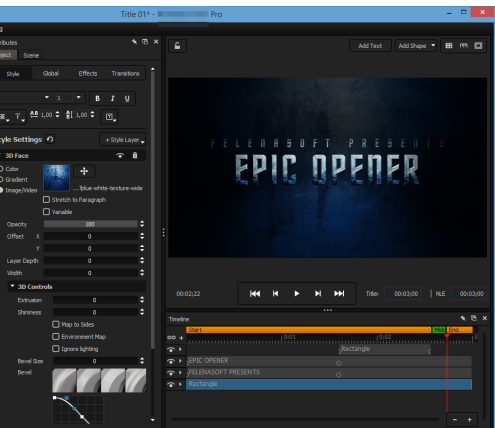
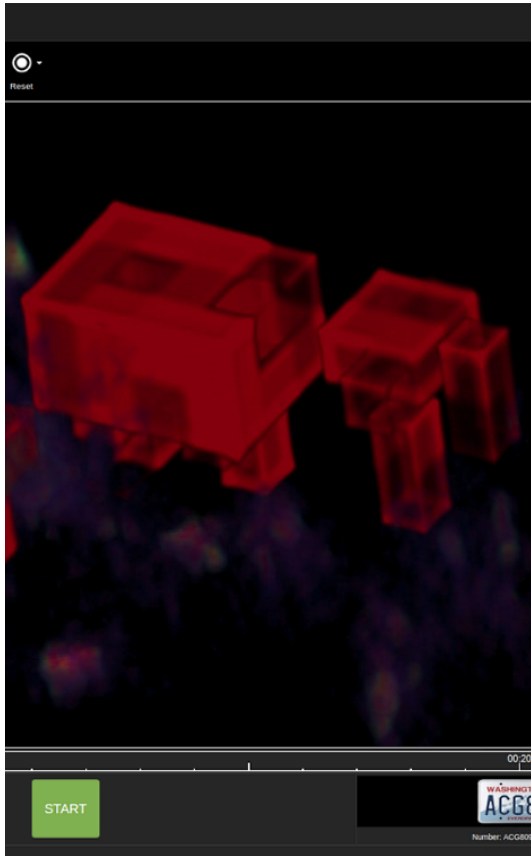
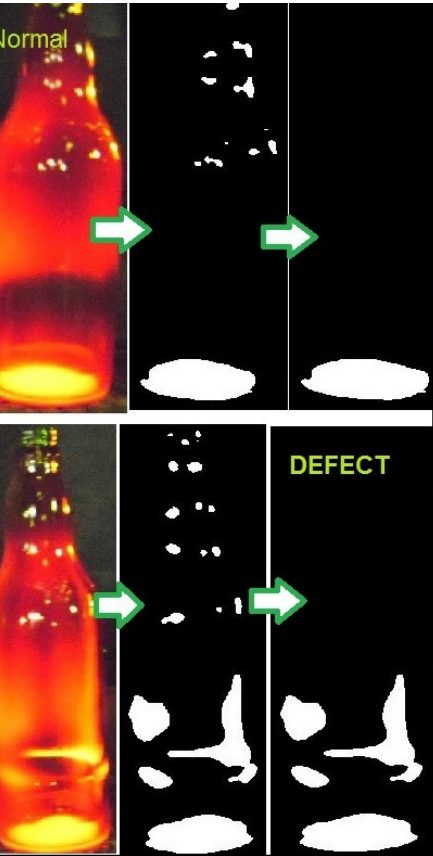


## CONTACT US

For any questions please  
visit [www.xeoma.com](http://www.xeoma.com)



# OUR OTHER PROJECTS



Learn more about us at [www.xeoma.com](http://www.xeoma.com)